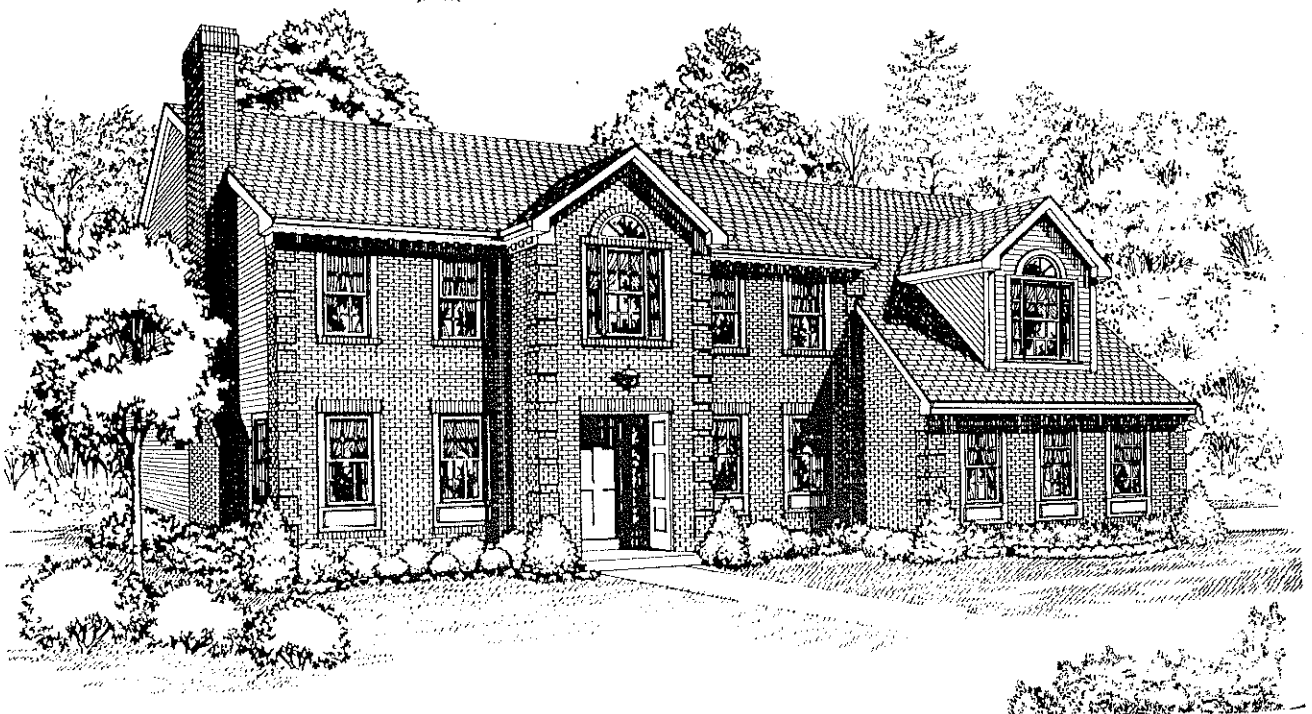


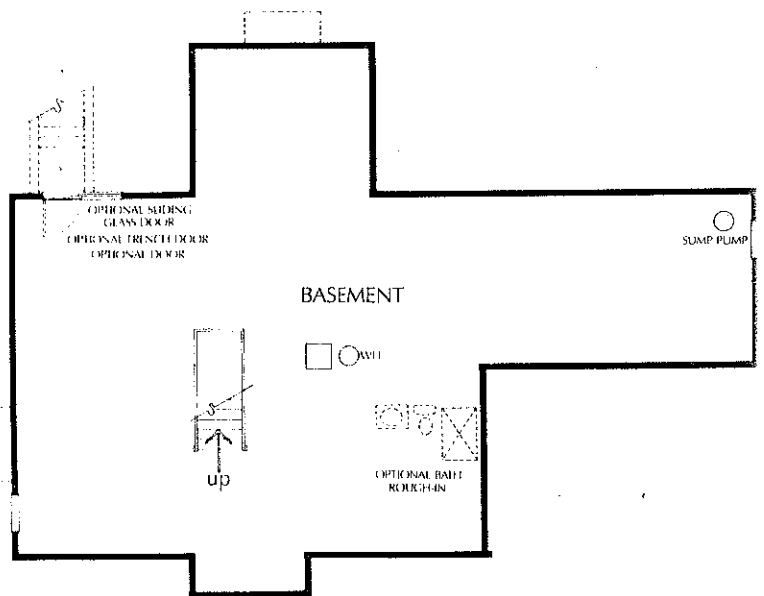
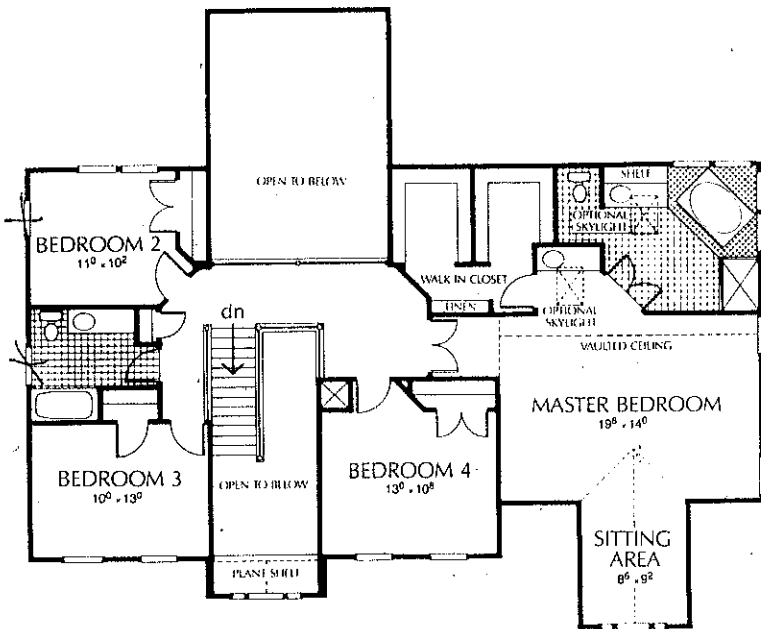
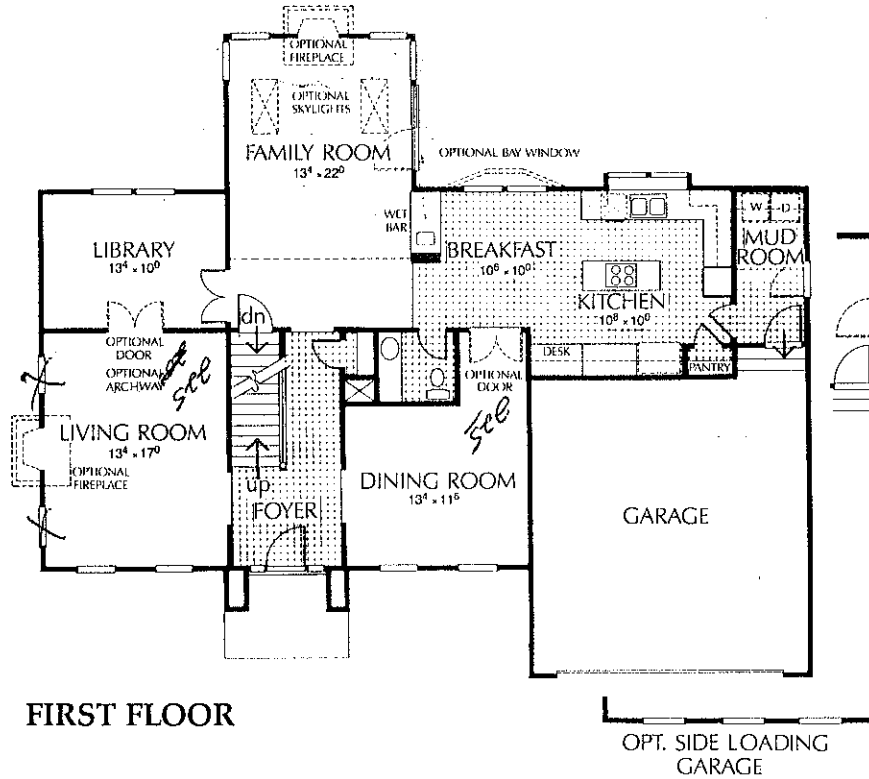
The Calvert



RYLAND HOMES

Built For Life

The Calvert

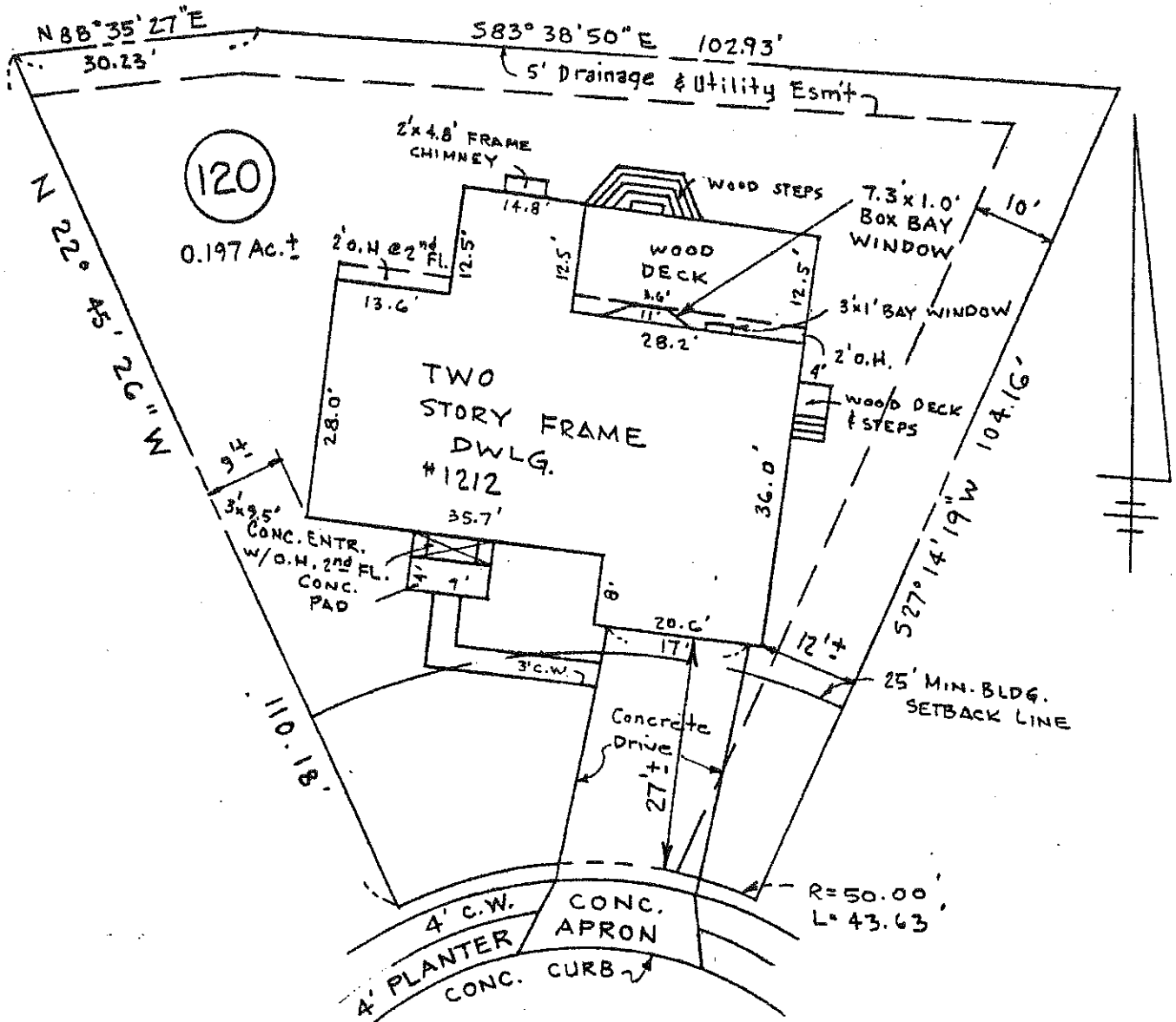


Product and specifications may vary by area. This brochure is for illustration only and is not part of a legal contract.



CURTAINED PAVED NO.
 ZONE "C"
 Z40010 0235 B

THIS PROPERTY
 IS NOT LOCATED
 IN A FLOOD
 HAZARD ZONE.



MAPLE
 LEAF
 COURT

LOCATION SURVEY
 #1212 MAPLE LEAF COURT
 LOT 120 - REVISION TO SECTION V
 "HUNTERS RUN"
 P.B. G3, FOLIO 93
 8TH ELECTION DISTRICT
 BALTIMORE COUNTY, MD.
 DEED: 9040 - 697

I HEREBY CERTIFY THAT THE LOT SHOWN HEREON HAS BEEN SURVEYED FOR THE PURPOSE OF LOCATING ALL IMPROVEMENTS AND THAT ALL SUCH IMPROVEMENTS ARE LOCATED AS SHOWN

M & H DEVELOPMENT ENGINEERS, INC.
 200 E. Joppa Road
 Suite 101, Shell Building
 Towson, Maryland 21286

DRAWN	SURVEYED	CHECKED	SCALE	DATE
-------	----------	---------	-------	------