

Keller Williams Excellence Realty

Proudly Presents



\$619,000.

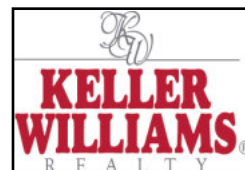
1212 Maple Leaf Court

Hunt Valley Station

www.1212MapleLeaf.com

Presented by: Realtor Marney

Marney Kirk



realtormarney@yahoo.com

www.realtormarney.com

Cell: 410-493-4884

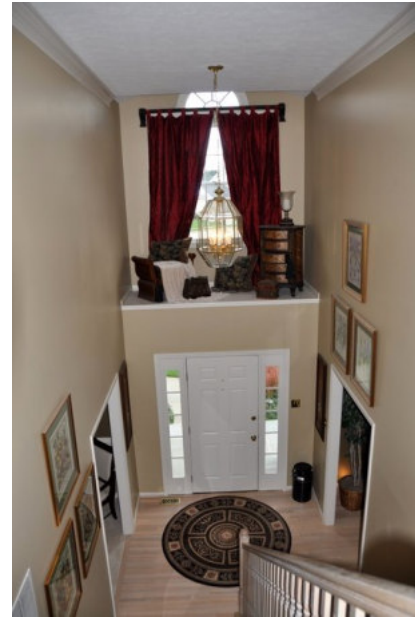
Keller Williams Excellence
1850 York Road, Suite K
Lutherville, MD 21093
Office: 410-560-5858



First Floor Features

TWO STORY FOYER

*Two Story Open to Second Floor Hallway
Hardwood Floor
Palladian Window
Extra Wide Crown Molding*



LIVING ROOM 13x17

*Hardwood Floor
Extra Wide Crown Molding
Track Showcase Lighting
French Doors to Study/Office*



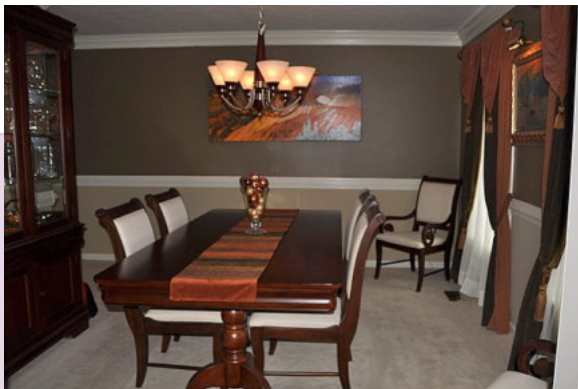
STUDY/LIBRARY 13x10

*Hardwood Floor
Extra Wide Crown Molding & Chair Rail
French Doors to Great Room and Living Room*



DINING ROOM 13x12

*White Wall-to-wall Carpet
Extra Wide Crown Molding & Chair Rail
French Doors to Kitchen*



First Floor Features Continued

FAMILY ROOM/GREAT ROOM 13x22

Two Story

Wall-to-wall Carpet

Open from Second Floor Hall

Wood Burning Fireplace with Marble Surround

Track Lighting

Andersen Sliding Glass Door to Deck and backyard

French Door to Lower Level



KITCHEN 21x10

Ceramic Tile Floor

Granite Counters

Stainless KitchenAid Dishwasher

Double Stainless Sink with

In-Sink-erator

Under Cabinet Lighting

GE Double Ovens

Island with Granite and JennAir Down-Draft Four

Burner Flat Top Radiant Cooktop with Pop out Grill

Whirlpool Gold Side-by-Side Designer Fit Stainless

Refrigerator with Water and Ice Dispenser

Kenmore Elite Dual Zone Wine Fridge

Built-in Stereo Cabinet with Hookup for In-Ceiling and

Outdoor Speakers



POWDER ROOM

Entrance from Kitchen

Ceramic Tile Floor

Extra Long Cabinet Sink

LAUNDRY/MUD ROOM

Ceramic Tile Floor

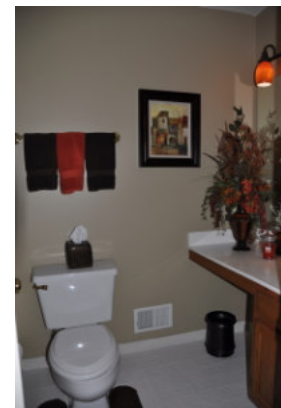
Built-in Cabinets

Kenmore Elite Washer

Kenmore Elite Dryer

Door to Two Car Garage

Door with Window to Side Yard



Second Floor Features

MASTER BEDROOM 19x14

Double Door Entry
Wall-to-wall Carpet
Ceiling Fan with Light
Cathedral Ceiling
Double Door Entry to Master Bath
Extra Long Cabinet Sink



EXTRA LARGE WALK-IN CLOSET

Built-in Shelves
Middle Unit with Racks and Shelves



SITTING ROOM 8x9

Vaulted Ceiling
Palladian Window

MASTER BATH

Ceramic Tile Floor
Ceiling Fan with Light
Two Person Soaking Tub
Four Foot Separate Shower
Extra Long Cabinet Sink



SECOND BEDROOM 13x11

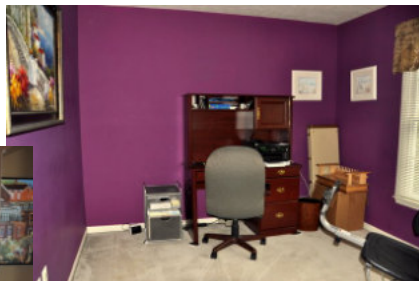
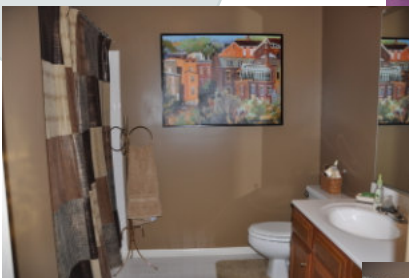
Wall-to-wall Carpet
Double Closet

THIRD BEDROOM 10x13

Wall-to-wall Carpet
Double Closet

FOURTH BEDROOM 11x10

White Carpet
Single Closet



SECOND FULL

BATH

Extra Long Cabinet Sink
Tub

Lower Level Features

*Recessed Lights & Berber Carpet Throughout
SITTING AREA*

Recessed Lighting

Storage Closet

WET BAR with Sink and Cabinets

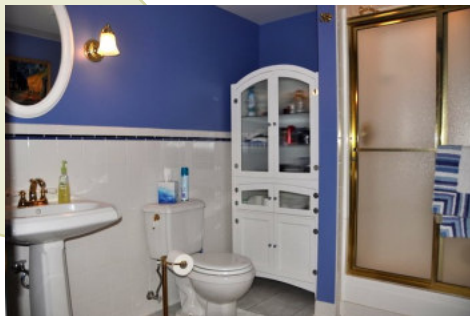
THIRD FULL BATH

Four Foot Wide Shower

Ceramic Tile Floor

Pedestal Sink

Exhaust Fan with HEAT!



CLUBROOM 13x11

Chair Rail

Electric Baseboard Heat

Wired for Home Theatre

French Door to Sitting Area

Private Locking Double Door to Bedroom

Corner Counter

STORAGE ROOM

Extra Frigidaire Refrigerator Conveys

Extra Large Window

Wash Tub

Poured Concrete Walls



POOL TABLE ROOM 13x17

Pool Table Lights

Electric Baseboard Heat

Double Door to Large Storage Room

Closet Under Stairs with Hanging Rod

Private Locking Double Door to Fifth Bedroom

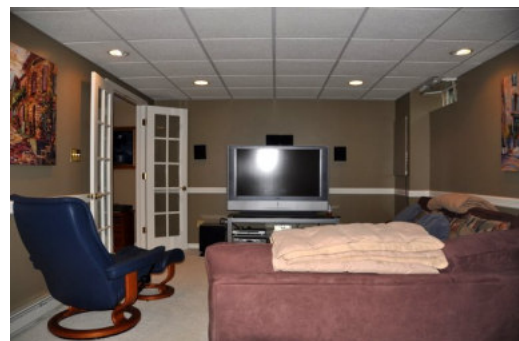
FIFTH BEDROOM 13x10

Chair Rail

Electric Baseboard Heat

Private Locking Double Door to Pool Room and

Clubroom



Amenities + Exterior Features

RYLAND Calvert Model

Situated at End of Cul De Sac

New Roof 2009

*Custom Bluestone Front Walk
Maxalea Landscaping*

*Wood Deck
Bluestone Patio and Wall in Backyard*

Dual Zoned HVAC — one unit in attic

Six Paneled Doors Throughout

French Doors

Andersen Doors and Windows Throughout

*Copper Pipe Running to House 2009 — PVC pipe
has been replaced*

New Belt Garage Door

Gas Runs to Street

Fios Runs to Street

*Base is poured concrete not block
All outside walls are insulated*

*Original Owners have beautifully built, upgraded
and maintained this fabulous home!*

